

Care360™ EHR with Data Exchange: Clinical Intelligence for Your Network

Efficient Systems Designed for Physicians

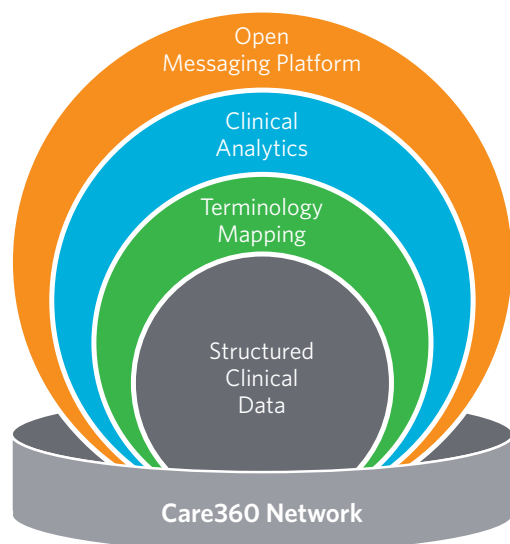
Partnering with industry leaders, Care360 delivers powerful clinical intelligence with innovative tools at the point of care and encourages care collaboration across settings.

Clinical Decision Support (CDS) represents a critical element of any EHR software program. To maximize its potential, CDS must be patient-centric and provider-focused, offer population management views, fit into a physician's workflow, and be supported by collaboration tools. It should allow technology to give you knowledge management tools that improve patient care and generate revenue through comprehensive care.

Care360 provides an innovative implementation of CDS that includes:

- Direct Project protocols and interoperability for **secure, simple messaging** among physicians, specialists, and the hospital
- Industry-leading Anvita Health™ Insight analytics engine with **3,500 evidence-based rules**
- Health Language, Inc.® (HLI) for **terminology mapping**
- A patient-centric **Clinical Data Repository** with the structured data and insights from more than 160,000 physicians and 10,000 prescribers served by our parent company, Quest Diagnostics®, including decades of experience and 40 billion lab results

Care360: Delivering Clinical Intelligence



Improve Patient Care

- Reduce unnecessary hospital readmissions with continuity of care, follow-up between settings, and exchange of test orders and results, e-referrals, and discharge summaries.
- Incorporate Meaningful Use quality measures to help physicians see real-time assessments against guidelines and improve population compliance to achieve goals.
- Ensure providers deliver the necessary clinical information for laboratory orders with computerized provider laboratory ordering that includes ABN and AOE alerts for Medicare and complex diagnostics.
- Reduce medication errors and adverse drug events to prevent morbidity and mortality with ePrescribing equipped with a broad range of data from Multum.
- Manage patient populations with dashboards that enable the physician to compare care delivery to national best practice guidelines, display gaps in care, identify patients in need of follow-up or screening, and reduce repetitious care.

Quest Diagnostics® Delivers Decades of Clinical Experience

As the healthcare IT subsidiary of Quest Diagnostics, the world's leading provider of diagnostic testing, MedPlus™ brings a wealth of clinical knowledge and experience to IT solutions.

Since 2003 we have served ambulatory physicians with the Care360™ Labs & Meds software platform, facilitating the transmission of clinical data and gaining knowledge from more than 40 billion lab results and 10,000 prescribers. Care360 EHR employs this rich clinical, structured laboratory and medication data in a Clinical Data Repository to improve the sensitivity and specificity of CDS alerts, reducing alert fatigue and workflow disruptions.

The implementation of CDS within the Care360 suite is more than a superficial nod to requirements from healthcare reforms. We recognize the value of placing clinical information at physicians' fingertips and the impact that has on patient care.

ePrescribing Intelligence from Multum

Physicians need current and accurate drug information to prevent inappropriate prescribing and avoid adverse drug events. Multum provides the industry's most complete medication database and is built into Care360.

- Delivers medication alerts, including drug interaction, dose range checking, age and gender reviews, and allergies.

Clinical Analytics Enhanced by Anvita Health™

From information on comparative risks and benefits of treatments to recognition of patient history trends that should trigger additional intervention, Anvita Health provides deep clinical insights. Driven by physicians, Anvita Health's leadership is represented on quality forums and includes industry visionaries. Built into Care360, the insight engine:

- Contains 3,500 evidence-based clinical rules, with flexible rule authoring and management.
- Processes data from a variety of sources – lab results, clinical diagnoses lists, and medication management.
- Analyzes data in real-time, making population-wide (batch) alerts or individual patient alerts for drug recalls and changes in medical guidelines.
- Identifies and compares treatment options for safety, efficacy, and adherence with thousands of medical management standards.
- Utilizes hierarchical condition categories to prioritize and deliver only the most relevant alerts.

Health Language, Inc.® (HLI) Supports Consistency

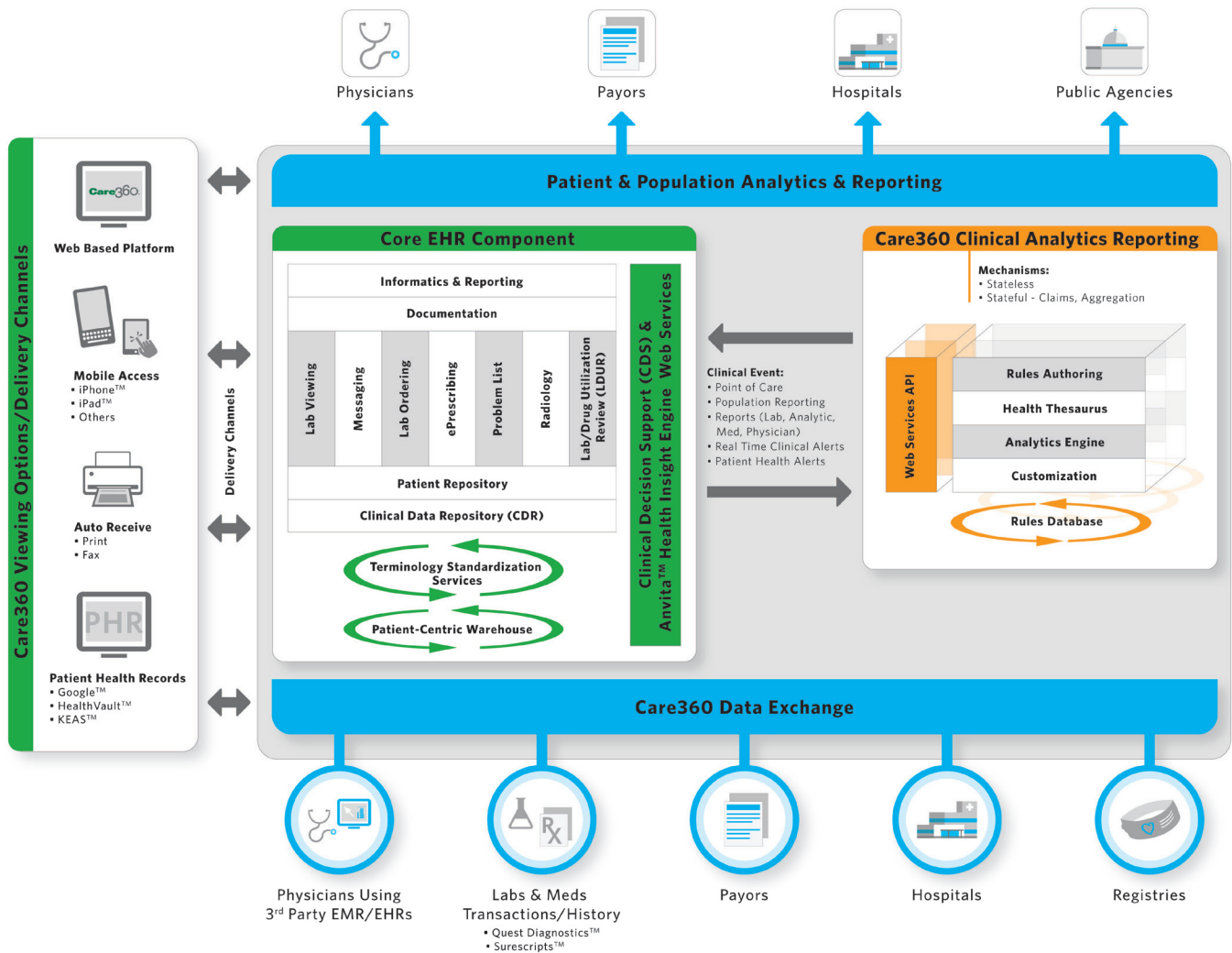
HLI is a global leader in managing and updating standard and localized medical terminology and coding. Within the Web-based Care360 EHR, HLI's updates are available as they happen, ensuring your physicians are using the most up-to-date language and codes and can match outdated terms for optimum collaboration.

HLI also:

- Manages medical terminology within Care360, providing real-time updates with changes in Medicare, coding, and medical terms.
- Updates with new medications, medical procedures and offers consumer-friendly terminology for patients.
- Maintains the consistency of medical concepts across patient settings, among physicians of different specialties, across geographic locations, and over time.
- Provides medical vocabulary compatibility during data exchange.
- Integrates into workflows to allow physicians and clinicians to enter clinical data as they know it instead of having to remember complex codes.
- Offers coding (SNOMED CT, CM, ICD-9 CM, ICD-10, CPT 4, MS-DRG, HCPCS), lab (LOINC and local) and medication (RxNorm, NDC, First DataBank, Multum, Medi-Span) terminology and code integration.

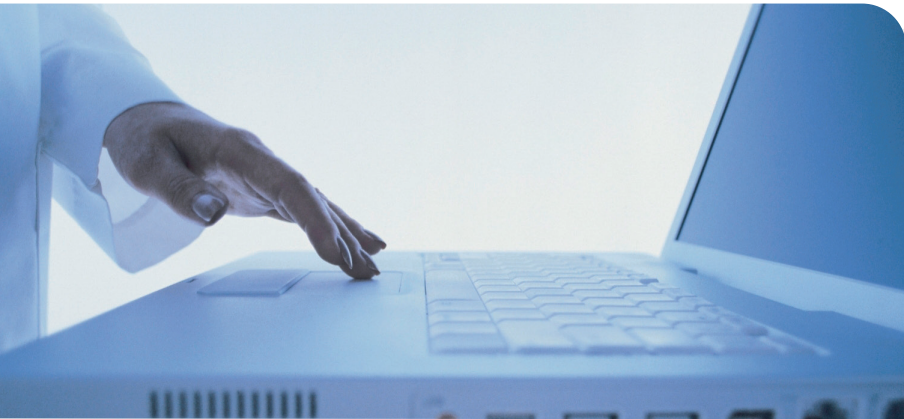
collaborate

Care360 EHR with Clinical Data Repository



“One factor that influenced our doctors to choose Care360 EHR was that Quest Diagnostics was behind it.”

Dr. Paulo Andre,
MetroWest Medical Center
Greater Boston Metropolitan Area



Care360™ Provides Physicians the Clinical Tools Physicians Need, Want, and Use

- Reduce alert fatigue by delivering relevant, accurate, and up-to-date alerts in a non-invasive fashion.
- Integrate with a clinician's natural workflow to avoid disruption.
- Deliver speedy answers and alerts without slowing the flow of note and clinical order entry.
- Stay current using a Web-based, single instance of software, ensuring that all physicians have access to the most current medical information.
- Utilize evidence-based logic derived from industry leaders in healthcare delivery, analytics, terminology, and care guidelines.
- Offer ambulatory physicians a CDS tool designed for them based on decades of experience working with small practices.
- Avoid the pitfalls of custom-authored rules in which CDS updates must be handled by your team members, which adds costs.
- Provide physicians with a computerized provider laboratory ordering process that includes AOE and ABN logic for complex diagnostics and Medicare patients.
- Give easy-to-read dashboards for population management, comparisons of care delivery against national guidelines, real-time assessments of Meaningful Use progress, and identification of gaps in care for chronic diseases.

MedPlus, the associated logo and all associated MedPlus marks are the registered trademarks of MedPlus, Inc., a wholly owned subsidiary of Quest Diagnostics. Quest, Quest Diagnostics, Care360 and Care360 EHR, ChartMaxx and the associated logos are the trademarks of Quest Diagnostics. ©2010 Quest Diagnostics Incorporated. All rights reserved. www.QuestDiagnostics.com. Health Language, Inc. (HLI) is a trademark of Health Language, Inc. Anvita is a trademark of Anvita Health.

"So many of the EHRs are so complicated. Quest Diagnostics (with MedPlus™) has created a system that is simple to use. Once you learn how to use the system, everything is right there."

Dr. Michael Brown,
Hazelwood Family Practice
Waynesville, NC

Driving Efficiency and Quality Care

Together, Care360 EHR with Data Exchange addresses your hospital's and physicians' patient care priorities — providing evidence-based clinical decision support at the point of care and improving care team collaboration.

Our Care360 solution facilitates reduced adverse drug events, fewer unnecessary hospital readmissions, improved operational efficiency, and enhanced care coordination, as well as helping physicians qualify for Meaningful Use incentives through improvement of clinical quality measures.

Meaningful Use ONC-ATCB Certified

This Complete EHR is 2011/2012 compliant and has been certified by the Certification Commission for Health Information Technology (CCHIT®), an ONC-ATCB, in accordance with the applicable certification criteria for eligible providers adopted by the Secretary of Health and Human Services. This certification does not represent an endorsement by the U.S. Department of Health and Human Services or guarantee the receipt of incentive payments. Quality measures certified are all 44 Eligible Provider measures.

Date Certified: March 31, 2011. Product version: 2011.2.
Certification number: CC-1112-936980-1.



Visit us at www.MedPlus.com
or call 800.444.6235